



Room 2, 27 Chester Street, Chesterfield, S40 1DW

£450 Per Month

- House Share
- Very Well Presented
- X3 Bedrooms
- Fitted Kitchen
- Rear Garden
- Popular Location
- Shared Accommodation
- x2 with En Suite
- Bathroom
- Fully FURNISHED

27 Chester Street, Chesterfield S40 1DW

HOUSE SHARE Available NOW is this Well Presented 4 Bedroom Property, Perfect for sharing.

This Property is situated on the popular Brampton Area, Well Placed for Walking Distance of the Town Centre, Bus Routes and Local Amenities on the doorstep.

All Rooms are Part Furnished, ideal for single occupancy, also with a Shared Kitchen Diner with Appliances and Lounge, along with Patio to the Rear.

Viewing is Strongly Advised.

Bills Inclusive (excluding broadband)



Council Tax Band: A



Lounge

14'7" x 12'5"

Kitchen

10'4" x 8'5"

Room 1

14'9" x 13'9"

En Suite

4'11" x 6'3"

Landing

Room 2

14'8" x 10'10"

En Suite

Room 3

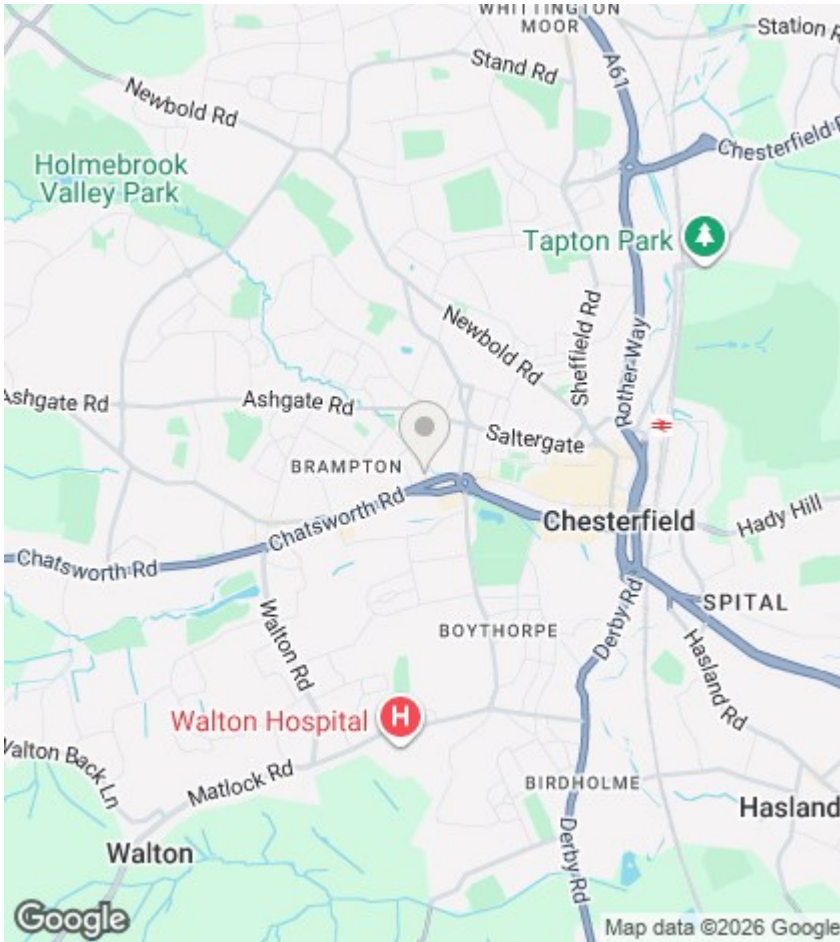
11'1" x 10'1"

Room 4

10'5" x 8'4"







Directions

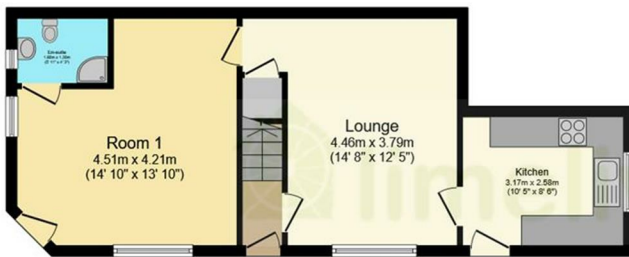
Viewings

Viewings by arrangement only. Call 01246 275 559 to make an appointment.

EPC Rating:

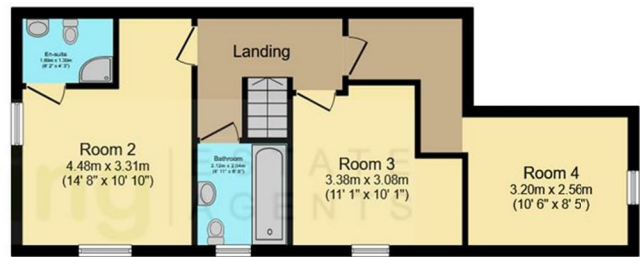
D

Energy Efficiency Rating		Current	Potential
Very energy efficient - lower running costs			
(92 plus) A			86
(81-91) B			
(69-80) C			
(55-68) D		58	
(39-54) E			
(21-38) F			
(1-20) G			
Not energy efficient - higher running costs			
England & Wales		EU Directive 2002/91/EC	



Ground Floor

Floor area 47.7 sq.m. (514 sq.ft.)



First Floor

Floor area 48.0 sq.m. (517 sq.ft.)

Total floor area: 95.8 sq.m. (1,031 sq.ft.)

This floor plan is for illustrative purposes only. It is not drawn to scale. Any measurements, floor areas (including any total floor area), openings and orientations are approximate. No details are guaranteed, they cannot be relied upon for any purpose and do not form any part of any agreement. No liability is taken for any error, omission or misstatement. A party must rely upon its own inspection(s). Powered by www.Propertybox.io